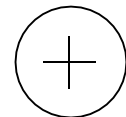


Microstrip connector

Contents

SMA series connector (dc-27ghz)	1
2.92mm series connector (dc-40ghz)	11
2.4mm series connector (dc-50ghz)	19
1.8mm detachable connector (dc-67ghz)	22
N-series connector (DC-18GHz)	23
SSMA series connector (dc-40ghz)	24
Combination and split pins	25

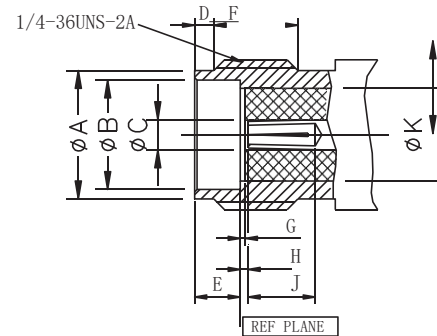
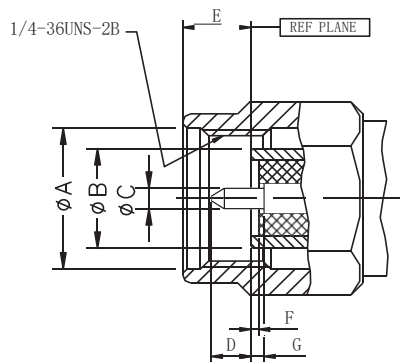


SMA connector series (DC~27GHz)

SMA series RF coaxial connector has the advantages of small size, wide frequency band, excellent mechanical performance and high reliability.

Main performance indexes	Materials / finishes
Characteristic impedance: 50Ω	Shell: stainless steel su303 polished / passivated
Frequency range: DC~27GHz	Center conductor: Beryllium Bronze gold plated (as per mil-g-45204)
Voltage standing wave ratio (VSWR) : DC~18GHz... 1.10:1 (Maximum) 18GHz~27GHz...1.15:1 (Maximum)	Insulator: PTFE&PEI
Contact resistance: center conductor ≤ 3.0m Ω Outer conductor ≤ 2.0m Ω	
Insulation resistance: ≥ 5000m Ω	
Dielectric Strength: 1000V	
Connector durability: 500 times	
Temperature range: -55℃~+165℃	

Interface dimension

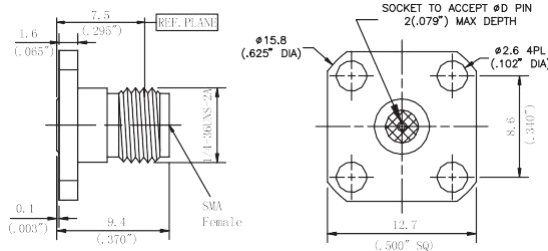


SMA Male				
	mm		Inch	
	Min	Max	Min	Max
A	6.48	6.73	0.255	0.265
B	4.52	4.59	0.1780	0.1808
C	0.90	0.93	0.0355	0.0365
D	2.03	2.29	0.080	0.090
E	2.59	3.35	0.102	0.132
F	0.00	0.05	0.000	0.002
G	0.00	0.08	0.000	0.003

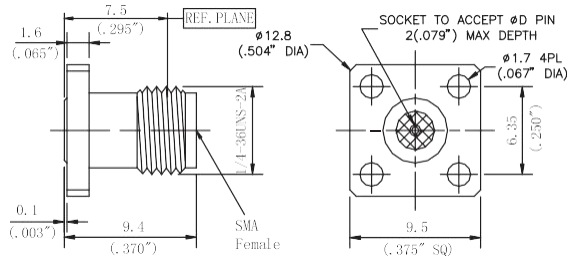
SMA Female				
	mm		Inch	
	Min	Max	Min	Max
A	5.28	5.49	0.208	0.216
B	4.60	4.67	0.1810	0.1837
C	1.27	1.29	0.0500	0.0506
D	0.38	1.14	0.015	0.045
E	1.88	1.98	0.074	0.078
F	3.81	—	0.150	—
G	0.00	0.05	0.000	0.002
H	0.00	0.08	0.000	0.003
J	2.54	—	0.100	—
K	4.10	4.13	0.1615	0.1625

注：界面符合 GJB681A

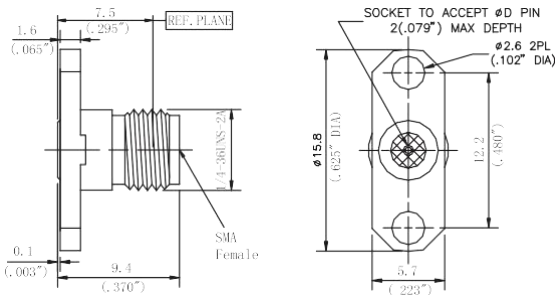
SMA detachable connector



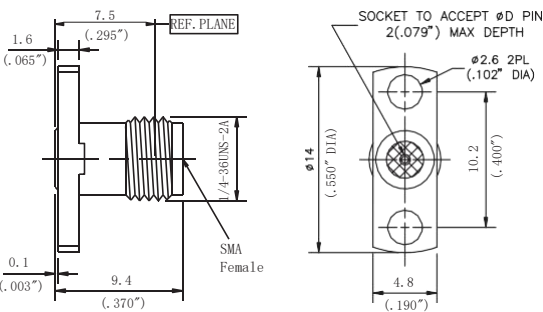
Model	Jack diameter Φ D1	Corresponding Model
SAFS23F01	0.23mm/0.009"	D550S09F01
SAFS30F01	0.30mm/0.012"	D550S12F01
SAFS38F01	0.38mm/0.015"	D550S15F01
SAFS45F01	0.46mm/0.018"	D550S18F01
SAFS51F01	0.51mm/0.020"	D550S20F01



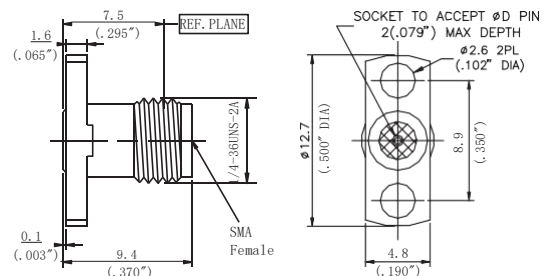
Model	Jack diameter Φ D1	Corresponding Model
SAFS23F02	0.23mm/0.009"	D550S09F02
SAFS30F02	0.30mm/0.012"	D550S12F02
SAFS38F02	0.38mm/0.015"	D550S15F02
SAFS45F02	0.46mm/0.018"	D550S18F02
SAFS51F02	0.51mm/0.020"	D550S20F02



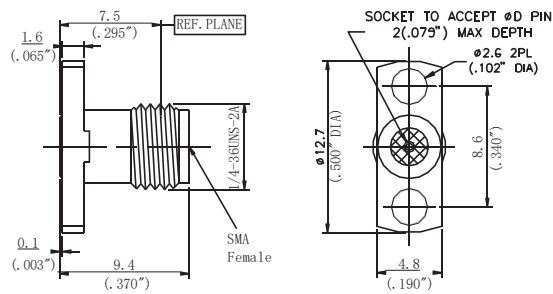
Model	Jack diameter Φ D1	Corresponding Model
SAFS23F04	0.23mm/0.009"	D550S09F04
SAFS30F04	0.30mm/0.012"	D550S12F04
SAFS38F04	0.38mm/0.015"	D550S15F04
SAFS45F04	0.46mm/0.018"	D550S18F04
SAFS51F04	0.51mm/0.020"	D550S20F04



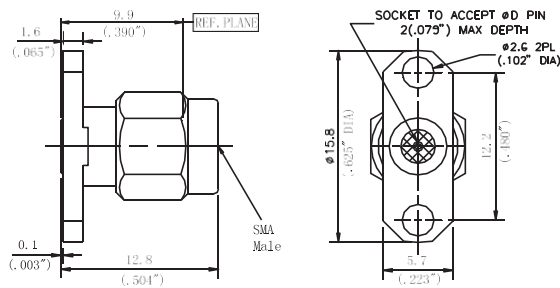
Model	Jack diameter Φ D1	Corresponding Model
SAFS23F05	0.23mm/0.009"	D550S09F05
SAFS30F05	0.30mm/0.012"	D550S12F05
SAFS38F05	0.38mm/0.015"	D550S15F05
SAFS45F05	0.46mm/0.018"	D550S18F05
SAFS51F05	0.51mm/0.020"	D550S20F05



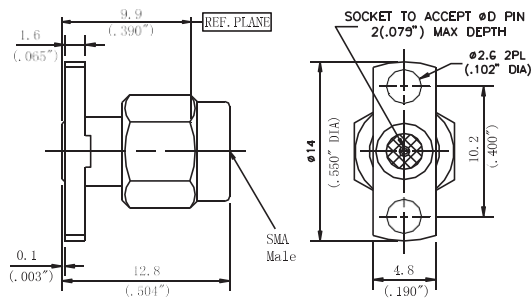
Model	Jack diameter Φ D1	Corresponding Model
SAFS23F06	0.23mm/0.009"	D550S09F06
SAFS30F06	0.30mm/0.012"	D550S12F06
SAFS38F06	0.38mm/0.015"	D550S15F06
SAFS45F06	0.46mm/0.018"	D550S18F06
SAFS51F06	0.51mm/0.020"	D550S20F06



Model	Jack diameter Φ D1	Corresponding Model
SAFS23F07	0.23mm/0.009 "	D550S09F07
SAFS30F07	0.30mm/0.012 "	D550S12F07
SAFS38F07	0.38mm/0.015 "	D550S15F07
SAFS45F07	0.46mm/0.018 "	D550S18F07
SAFS51F07	0.51mm/0.020 "	D550S20F07

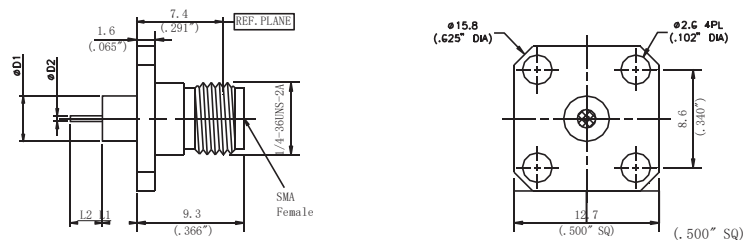


Model	Jack diameter Φ D1	Corresponding Model
SAMS30F04	0.30mm/0.012 "	D551S12F04
SAMS45F04	0.38mm/0.015 "	D551S15F04
SAMS45F04	0.46mm/0.018 "	D551S18F04
SAMS51F04	0.51mm/0.020 "	D551S20F04

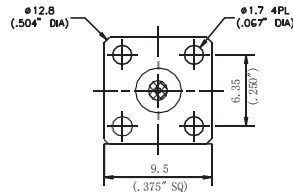
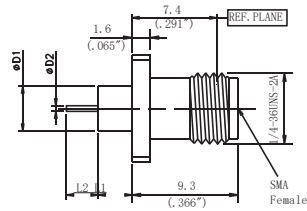


Model	Jack diameter Φ D1	Corresponding Model
SAMS30F05	0.30mm/0.012 "	D551S12F05
SAMS45F05	0.38mm/0.015 "	D551S15F05
SAMS45F05	0.46mm/0.018 "	D551S18F05
SAMS51F05	0.51mm/0.020 "	D551S20F05

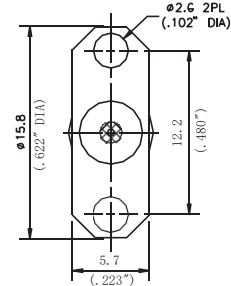
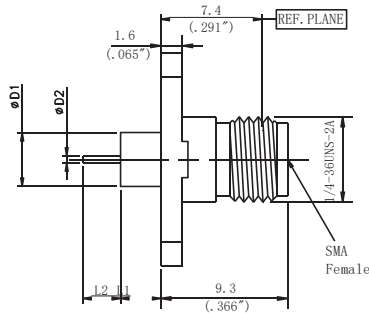
SMA metal through wall connector



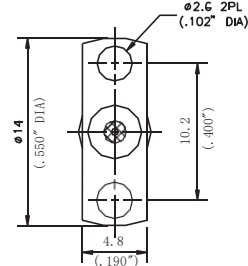
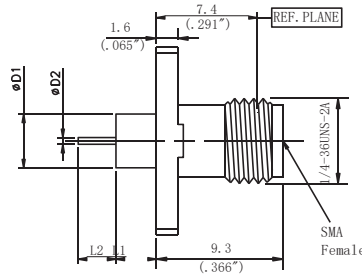
Model	Φ D1	Φ D2	L1	L2	Corresponding Model
SAFM0101F01	4mm/0.158 "	0.8mm/0.031 "	4mm/0.158 "	2mm/0.079 "	D550M0101F01
SAFM0202F01	4mm/0.158 "	0.38mm/0.015 "	3mm/0.118 "	2mm/0.079 "	D550M0202F01



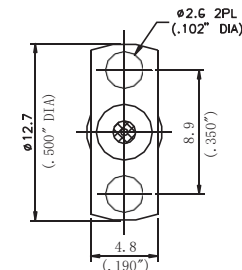
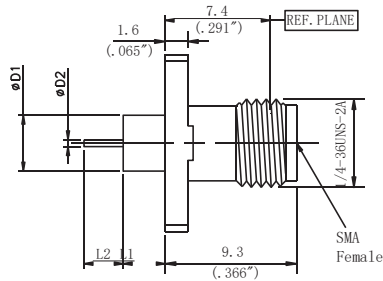
Model	$\Phi D1$	$\Phi D2$	L1	L2	Corresponding Model
SAFM0101F02	4mm/0.158"	0.8mm/0.031"	4mm/0.158"	2mm/0.079"	D550M0101F02
SAFM0202F02	4mm/0.158"	0.38mm/0.015"	3mm/0.118"	2mm/0.079"	D550M0202F02



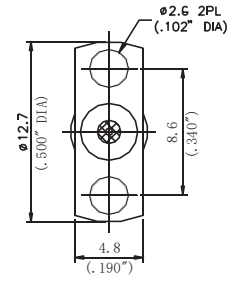
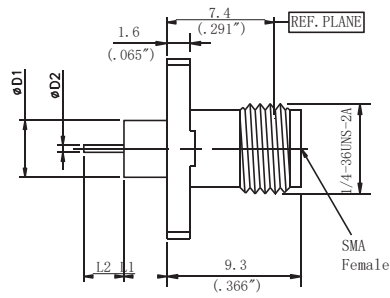
Model	$\Phi D1$	$\Phi D2$	L1	L2	Corresponding Model
SAFM0101F04	4mm/0.158"	0.8mm/0.031"	4mm/0.158"	2mm/0.079"	D550M0101F04
SAFM0202F04	4mm/0.158"	0.38mm/0.015"	3mm/0.118"	2mm/0.079"	D550M0202F04



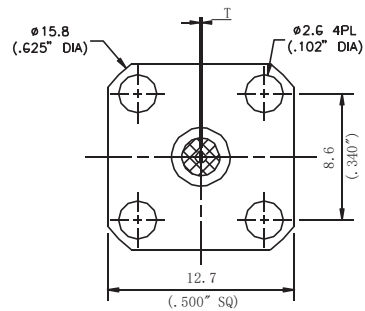
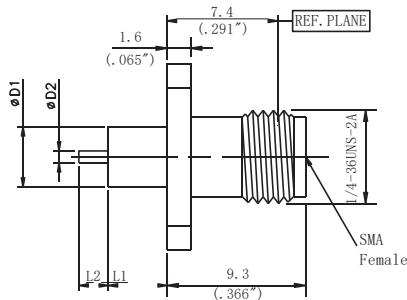
Model	$\Phi D1$	$\Phi D2$	L1	L2	Corresponding Model
SAFM0101F05	4mm/0.158"	0.8mm/0.031"	4mm/0.158"	2mm/0.079"	D550M0101F05
SAFM0202F05	4mm/0.158"	0.38mm/0.015"	3mm/0.118"	2mm/0.079"	D550M0202F05



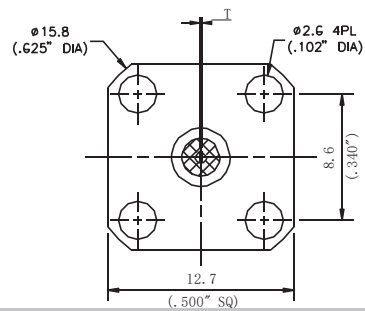
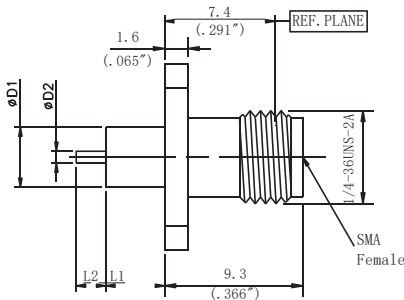
Model	$\Phi D1$	$\Phi D2$	L1	L2	Corresponding Model
SAFM0101F06	4mm/0.158"	0.8mm/0.031"	4mm/0.158"	2mm/0.079"	D550M0101F06
SAFM0202F06	4mm/0.158"	0.38mm/0.015"	3mm/0.118"	2mm/0.079"	D550M0202F06



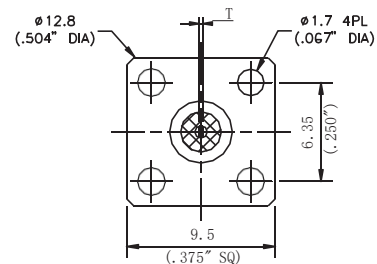
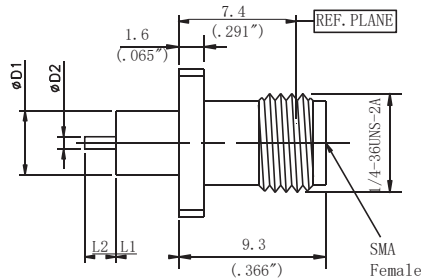
Model	$\Phi D1$	$\Phi D2$	L1	L2	Corresponding Model
SAFM0101F07	4mm/0.158"	0.8mm/0.031"	4mm/0.158"	2mm/0.079"	D550M0101F07
SAFM0202F07	4mm/0.158"	0.38mm/0.015"	3mm/0.118"	2mm/0.079"	D550M0202F07



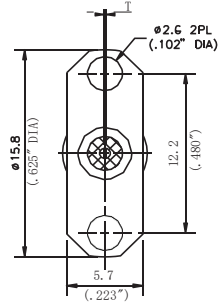
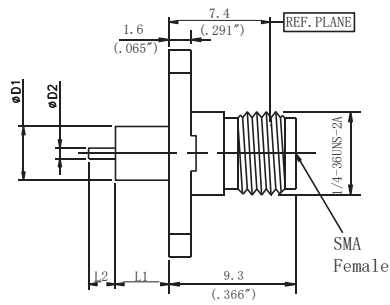
Model	$\Phi D1$	$\Phi D2$	L1	L2	Corresponding Model
SAFM0313F01	6mm/0.236"	1mm/0.039"	4mm/0.158"	1.5mm/0.059"	D550M0313F01



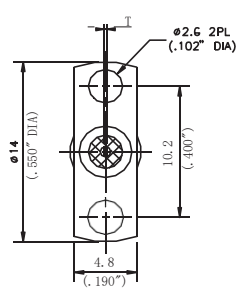
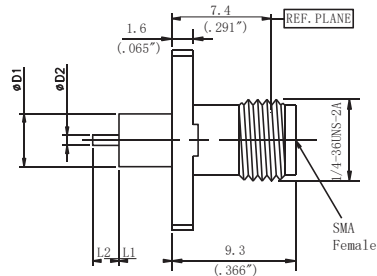
Model	$\Phi D1$	$\Phi D2$	L1	L2	T	Corresponding Model
SAFM0112F01	4mm/0.158"	0.8mm/0.031"	4mm/0.158"	1.5mm/0.059"	0.2mm/0.008"	D550M0112F01



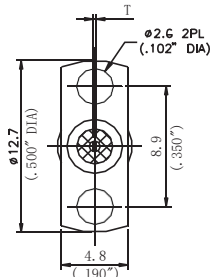
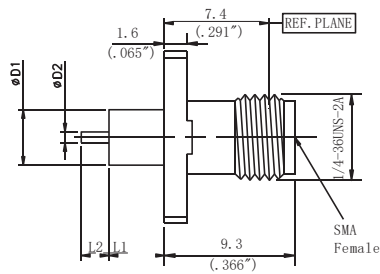
Model	$\Phi D1$	$\Phi D2$	L1	L2	T	Corresponding Model
SAFM0112F02	4mm/0.158"	0.8mm/0.031"	4mm/0.158"	1.5mm/0.059"	0.2mm/0.008"	D550M0112F02



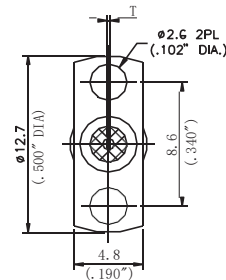
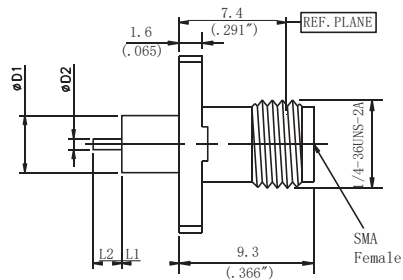
Model	ΦD1	ΦD2	L1	L2	T	Corresponding Model
SAFM0112F04	4mm/0.158"	0.8mm/0.031"	4mm/0.158"	1.5mm/0.059"	0.2mm/0.008"	D550M0112F04
SAFM0112F04C	4mm/0.158"	0.8mm/0.031"	4mm/0.158"	1.5mm/0.059"	0.2mm/0.008"	D550M0112F04C



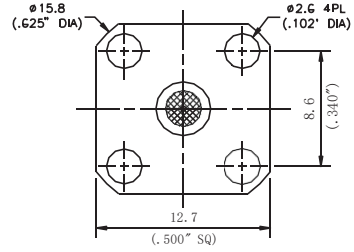
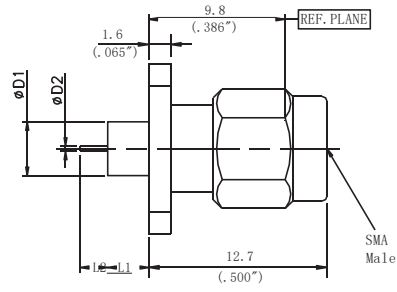
Model	ΦD1	ΦD2	L1	L2	T	Corresponding Model
SAFM0112F05	4mm/0.158"	0.8mm/0.031"	4mm/0.158"	1.5mm/0.059"	0.2mm/0.008"	D550M0112F05
SAFM0112F05C	4mm/0.158"	0.8mm/0.031"	4mm/0.158"	1.5mm/0.059"	0.2mm/0.008"	D550M0112F05C



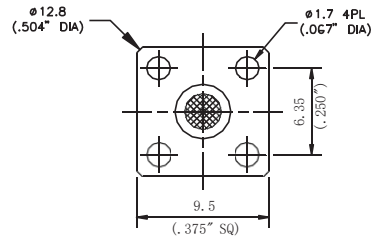
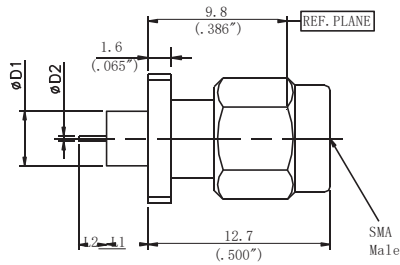
Model	ΦD1	ΦD2	L1	L2	T	Corresponding Model
SAFM0112F06	4mm/0.158"	0.8mm/0.031"	4mm/0.158"	1.5mm/0.059"	0.2mm/0.008"	D550M0112F06
SAFM0112F06C	4mm/0.158"	0.8mm/0.031"	4mm/0.158"	1.5mm/0.059"	0.2mm/0.008"	D550M0112F06C



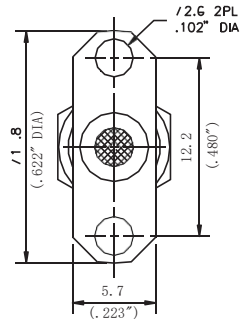
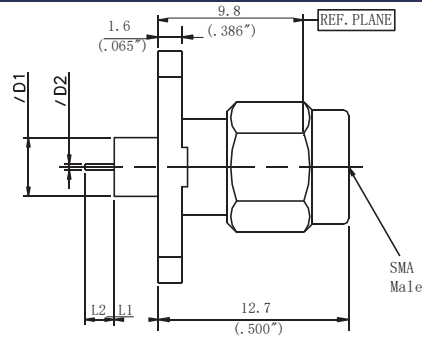
Model	ΦD1	ΦD2	L1	L2	T	Corresponding Model
SAFM0112F07	4mm/0.158"	0.8mm/0.031"	4mm/0.158"	1.5mm/0.059"	0.2mm/0.008"	D550M0112F07
SAFM0112F07C	4mm/0.158"	0.8mm/0.031"	4mm/0.158"	1.5mm/0.059"	0.2mm/0.008"	D550M0112F07C



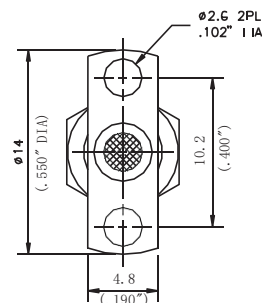
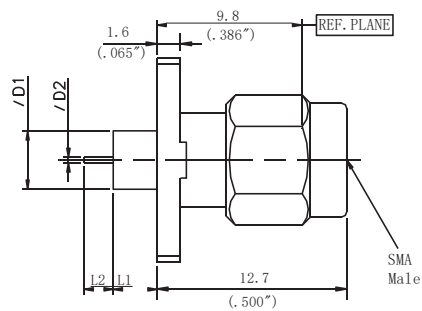
Model	ΦD1	ΦD2	L1	L2	Corresponding Model
SAMM0202F01	4mm/0.158"	0.38mm/0.015"	3mm/0.118"	2mm/0.079"	D551M0202F01



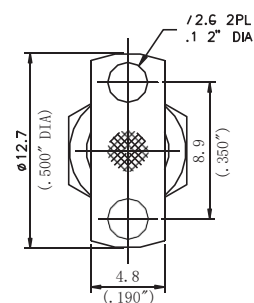
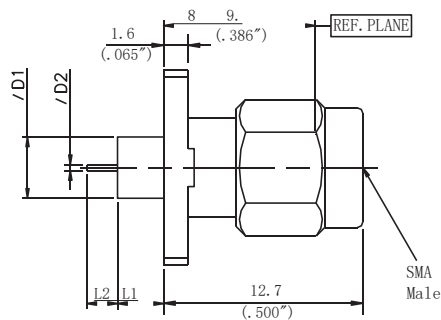
Model	ΦD1	ΦD2	L1	L2	Corresponding Model
SAMM0202F02	4mm/0.158"	0.38mm/0.015"	3mm/0.118"	2mm/0.079"	D551M0202F02



Model	ΦD1	ΦD2	L1	L2	Corresponding Model
SAMM0202F04	4mm/0.158	0.38mm/0.015	3mm/0.118	2mm/0.079	D551M0202F04

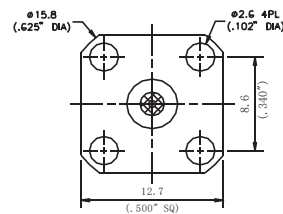
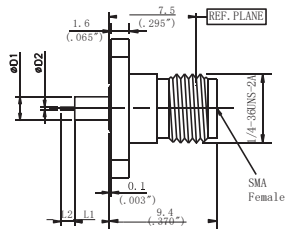


Model	ΦD1	ΦD2	L1	L2	Corresponding Model
SAMM0202F05	4mm/0.158"	0.38mm/0.015"	3mm/0.118"	2mm/0.079"	D551M0202F05

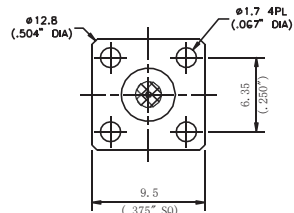
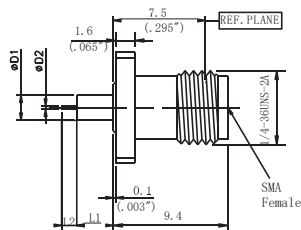


Model	ΦD1	ΦD2	L1	L2	Corresponding Model
SAMM0202F06	4mm/0.158"	0.38mm/0.015"	3mm/0.118"	2mm/0.079"	D551M0202F06

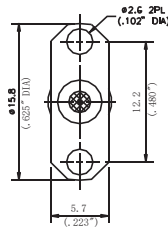
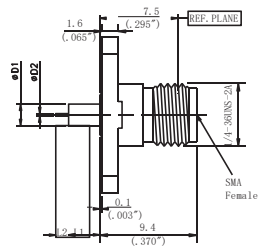
SMA media through wall connector



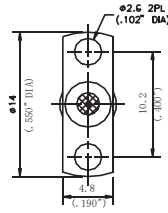
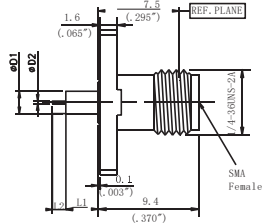
Model	ΦD1	ΦD2	L1	L2	Corresponding Model
SAFFP0103F01	2.2mm/0.087"	0.30mm/0.012"	3.2mm/0.126"	1.27mm/0.05"	D550P0103F01
SAFFP0304F01	2.1mm/0.083"	0.64mm/0.025"	15mm/0.59"	3mm/0.118"	D550P0304F01



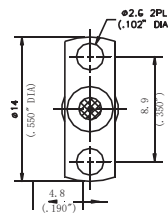
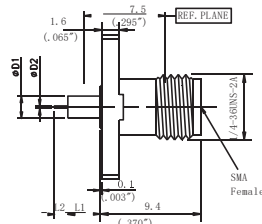
Model	ΦD1	ΦD2	L1	L2	Corresponding Model
SAFFP0103F02	2.2mm/0.087"	0.30mm/0.012"	3.2mm/0.126"	1.27mm/0.05"	D550P0103F02
SAFFP0304F02	2.1mm/0.083"	0.64mm/0.025"	15mm/0.59"	3mm/0.118"	D550P0304F02



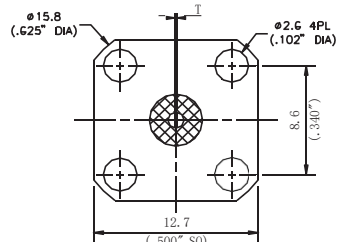
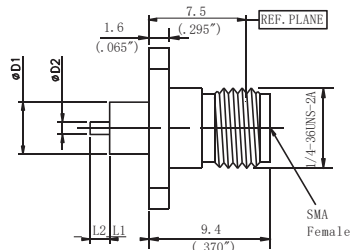
Model	ΦD1	ΦD2	L1	L2	Corresponding Model
SAFP0103F04	2.2mm/0.087"	0.30mm/0.012"	3.2mm/0.126"	1.27mm/0.05"	D550P0103F04
SAFP0304F04	2.1mm/0.083"	0.64mm/0.025"	15mm/0.59"	3mm/0.118"	D550P0304F04



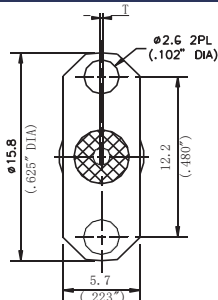
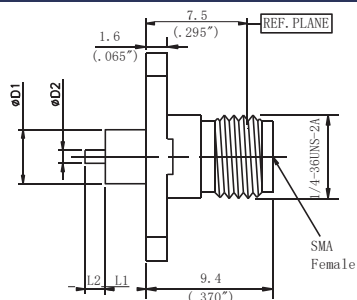
Model	ΦD1	ΦD2	L1	L2	Corresponding Model
SAFP0103F05	2.2mm/0.087"	0.30mm/0.012"	3.2mm/0.126"	1.27mm/0.05"	D550P0103F05
SAFP0304F05	2.1mm/0.083"	0.64mm/0.025"	15mm/0.59"	3mm/0.118"	D550P0304F05



Model	ΦD1	ΦD2	L1	L2	Corresponding Model
SAFP0103F06	2.2mm/0.087"	0.30mm/0.012"	3.2mm/0.126"	1.27mm/0.05"	D550P0103F06
SAFP0304F06	2.1mm/0.083"	0.64mm/0.025"	15mm/0.59"	3mm/0.118"	D550P0304F06

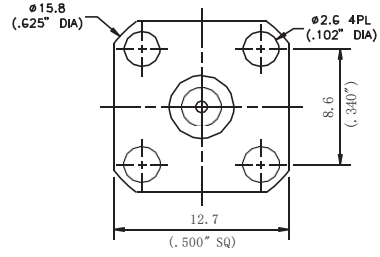
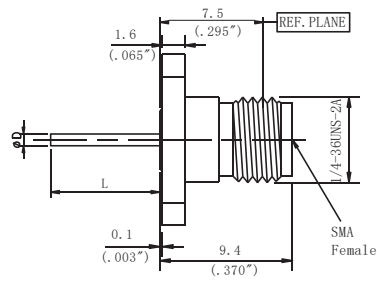


Model	ΦD1	ΦD2	L1	L2	T	Corresponding Model
SAFP0713F01	4.1mm/0.162"	1mm/0.04"	4mm/0.158"	1.5mm/0.06"	0.2mm/0.008"	D550P0713F01
SAFP0813F01	4.1mm/0.162"	1mm/0.04"	3mm/0.118"	1.5mm/0.06"	0.2mm/0.008"	D550P0813F01

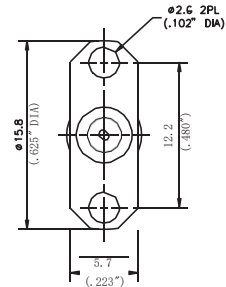
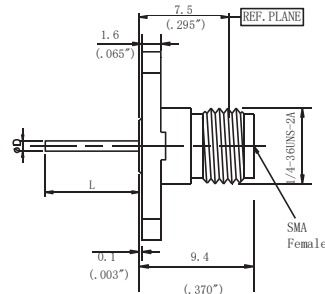


Model	ΦD1	ΦD2	L1	L2	T	Corresponding Model
SAFP0713F04C	4.1mm/0.162"	1mm/0.04"	4mm/0.158"	1.5mm/0.06"	0.2mm/0.008"	D550P0713F04C
SAFP0813F04C	4.1mm/0.162"	1mm/0.04"	3mm/0.118"	1.5mm/0.06"	0.2mm/0.008"	D550P0813F04C

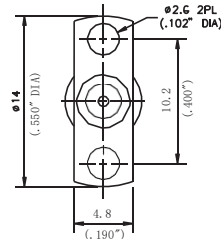
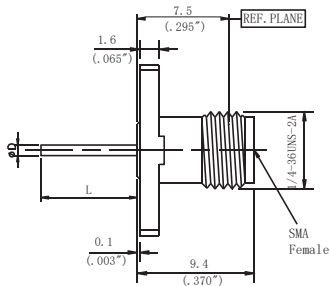
SMA air wire through wall connector



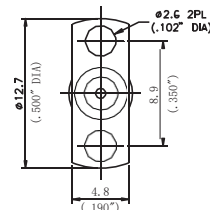
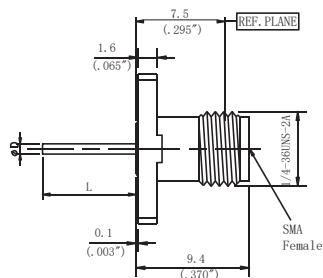
Model	ΦD	L	Corresponding Model
SAFD 25F01-709	0.64mm/0.025	18mm/0.71	D550D25F01-709



Model	ΦD	L	Corresponding Model
SAFD 25F04-709	0.64mm/0.025	18mm/0.71	D550D25F04-709

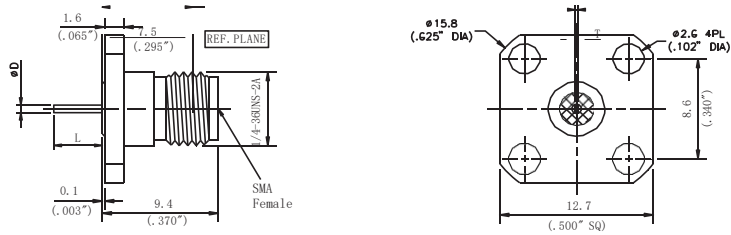


Model	ΦD	L	Corresponding Model
SAFD 25F05-709	0.64mm/0.025	18mm/0.71	D550D25F05-709

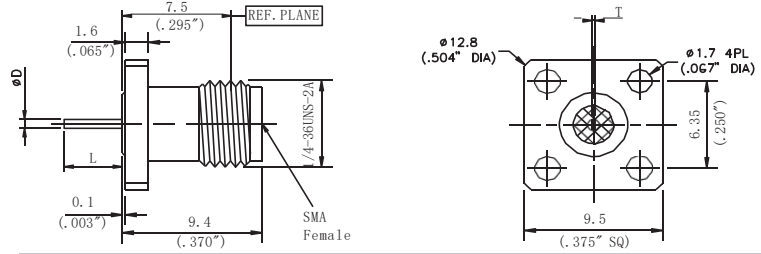


Model	ΦD	L	Corresponding Model
SAFD 25F06-709	0.64mm/0.025	18mm/0.71	D550D25F06-709

SMA direct connector

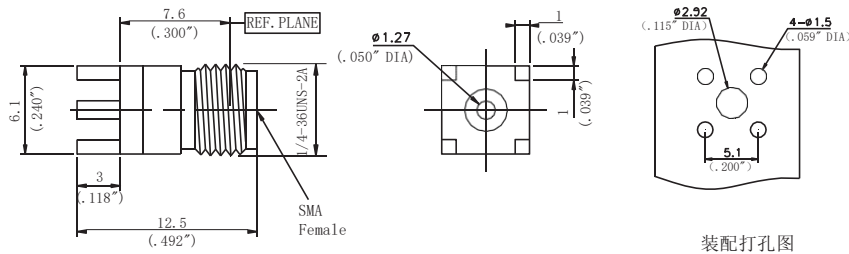


Model	ΦD	L	T	Corresponding Model
SAFT11F01	0.64mm/0.025 "	4mm/0.158 "	0.2mm/0.008 "	D550T11F01
SAFT14F01	1.27mm/0.050 "	1.27mm/0.050 "	0.15mm/0.006 "	D550T14F01

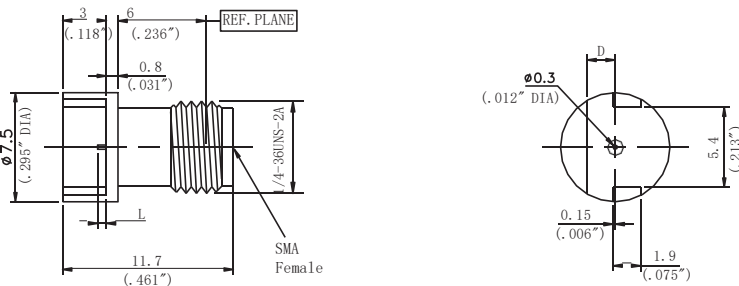


Model	ΦD	L	T	Corresponding Model
SAFT11F02	0.64mm/0.025 "	4mm/0.158 "	0.2mm/0.008 "	D550T11F02
SAFT14F02	1.27mm/0.050 "	1.27mm/0.050 "	0.15mm/0.006 "	D550T14F02

SMA PCB connector



Model
SAFB51H01-118



Model	ΦD	L	Suitable for plate thickness	Corresponding Model
SAFB12E01-023	1.93mm/0.076 "	0.6mm/0.023 "	1.78mm/0.070 "	D550B12E01-023
SAFB12E02-023	0.76mm/0.030 "	0.6mm/0.023 "	0.61mm/0.024 "	D550B12E02-023
SAFB12E03-023	1.02mm/0.040 "	0.6mm/0.023 "	0.87mm/0.034 "	D550B12E03-023
SAFB12E01-048	1.93mm/0.076 "	1.22mm/0.048 "	1.78mm/0.070 "	D550B12E01-048
SAFB12E02-048	0.76mm/0.030 "	1.22mm/0.048 "	0.61mm/0.024 "	D550B12E02-048
SAFB12E03-048	1.02mm/0.040 "	1.22mm/0.048 "	0.87mm/0.034 "	D550B12E03-048

2.92mm Connector family (DC~40GHz)

2.92mm Series RF coaxial connector, also known as K-type connector and SMK connector, was invented by willtron company of the United States. The working frequency of the main mode of the 2.92mm connector can reach up to 46ghz, covering the whole 8mm frequency band. In recent years, with the continuous growth of domestic millimeter wave application demand, 2.92mm connector has become the mainstream millimeter wave connector with the largest market demand, and is the first choice of millimeter wave connector. 2.92mm connector interface is compatible with SMA and 3.5mm connector.

Main performance indexes

Materials / finishes

Characteristic impedance: 50Ω

Shell: stainless steel su303 polished / passivated

Frequency range: DC~40GHz

Center conductor: Beryllium Bronze gold plated (as per mil-g-45204)

Voltage standing wave ratio (VSWR) :

Insulator: PEI or PEI&PTFE

DC~40GHz···· 1.15:1 (Maximum)

Contact resistance: center conductor ≤ 3.0m Ω

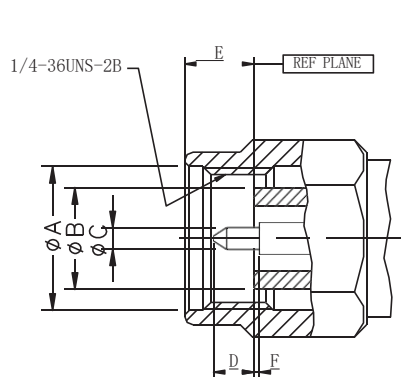
Outer conductor ≤ 2.0m Ω Insulation resistance: ≥ 3000mΩ

Dielectric Strength: 750V

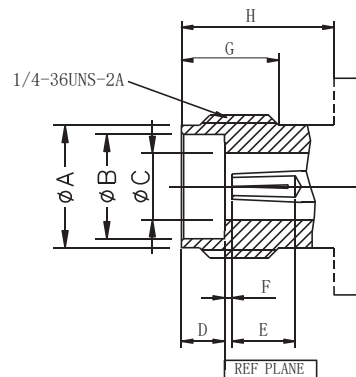
Connector durability: 500 times temperature range: - 55 °C

~ + 165 °C

Interface dimension



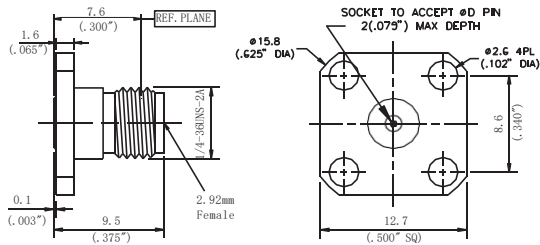
2.92mm Male				
	mm		Inch	
	Min	Max	Min	Max
A	6.48	---	0.255	---
B	4.52	4.57	0.178	0.180
C	0.90	0.94	0.0355	0.0370
D	1.40	1.65	0.055	0.065
E	---	3.43	---	0.135
F	0.00	0.13	0.000	0.005



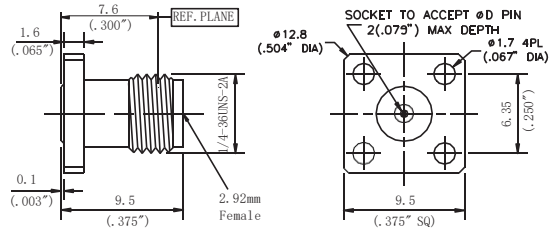
2.92mm Female				
	mm		Inch	
	Min	Max	Min	Max
A	5.23	5.44	0.206	0.214
B	4.60	4.65	0.181	0.183
C	2.90	2.95	0.114	0.116
D	1.88	1.98	0.074	0.078
E	2.67	---	0.105	---
F	0.00	0.13	0.000	0.005
G	4.32	---	0.170	---
H	5.54	---	0.218	---

注：界面符合 MIL-STD-348A

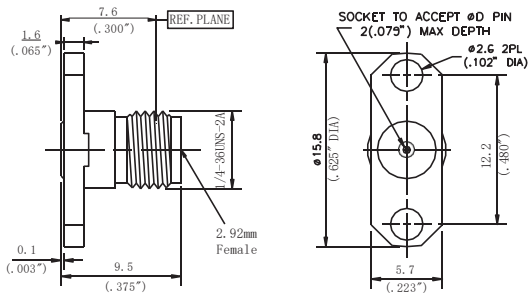
2. 92mm detachable connector



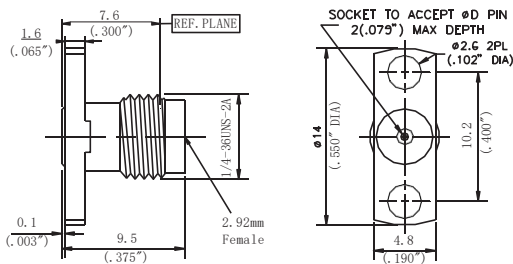
Model	Jack diameter Φ D1	Corresponding Model
29FS23F01	0.23mm/0.009 "	D360S09F01
29FS30F01	0.30mm/0.012 "	D360S12F01
29FS38F01	0.38mm/0.015 "	D360S15F01
29FS51F01	0.51mm/0.020 "	D360S20F01



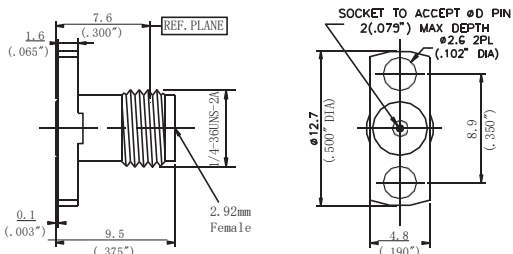
Model	Jack diameter Φ D1	Corresponding Model
29FS23F02	0.23mm/0.009 "	D360S09F02
29FS30F02	0.30mm/0.012 "	D360S12F02
29FS38F02	0.38mm/0.015 "	D360S15F02
29FS51F02	0.51mm/0.020 "	D360S20F02



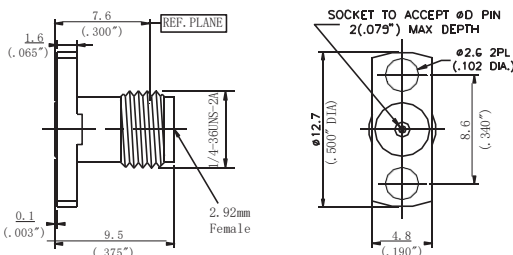
Model	Jack diameter Φ D1	Corresponding Model
29FS23F04	0.23mm/0.009 "	D360S09F04
29FS30F04	0.30mm/0.012 "	D360S12F04
29FS38F04	0.38mm/0.015 "	D360S15F04
29FS51F04	0.51mm/0.020 "	D360S20F04



Model	Jack diameter Φ D1	Corresponding Model
29FS23F05	0.23mm/0.009 "	D360S09F05
29FS30F05	0.30mm/0.012 "	D360S12F05
29FS38F05	0.38mm/0.015 "	D360S15F05
29FS51F05	0.51mm/0.020 "	D360S20F05

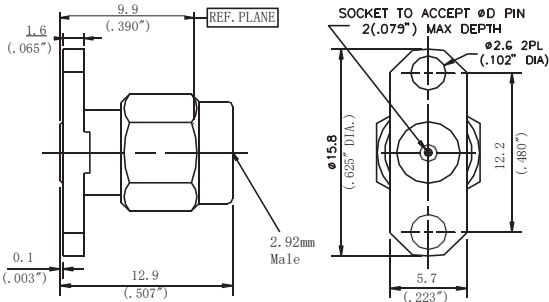


Model	Jack diameter Φ D1	Corresponding Model
29FS23F06	0.23mm/0.009 "	D360S09F06
29FS30F06	0.30mm/0.012 "	D360S12F06
29FS38F06	0.38mm/0.015 "	D360S15F06
29FS51F06	0.51mm/0.020 "	D360S20F06

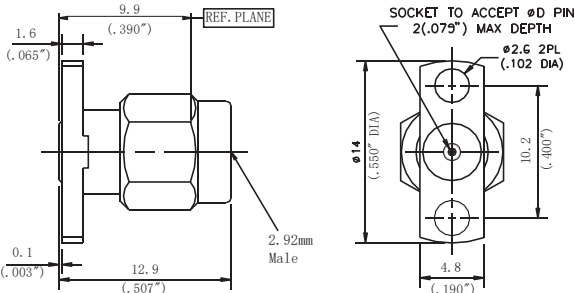


Model	Jack diameter Φ D1	Corresponding Model
29FS23F07	0.23mm/0.009 "	D360S09F07
29FS30F07	0.30mm/0.012 "	D360S12F07
29FS38F07	0.38mm/0.015 "	D360S15F07
29FS51F07	0.51mm/0.020 "	D360S20F07

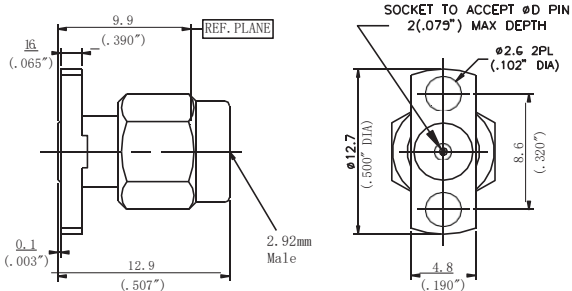
2. 92mm detachable connector



Model	Jack diameter Φ D1	Corresponding Model
29MS30F04	0.3mm/0.012 "	D361S12F04
29MS38F04	0.38mm/0.015 "	D361S15F04
29MS51F04	0.51mm/0.020 "	D361S20F04

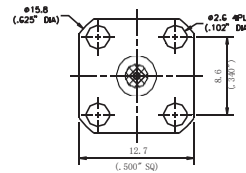
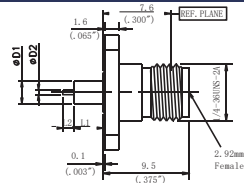


Model	Jack diameter Φ D1	Corresponding Model
29MS30F05	0.3mm/0.012 "	D361S12F05
29MS38F05	0.38mm/0.015 "	D361S15F05
29MS51F05	0.51mm/0.020 "	D361S20F05

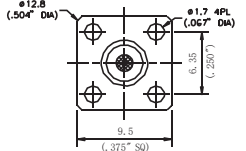
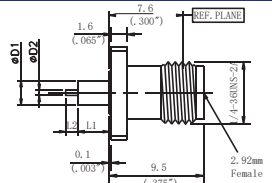


Model	Jack diameter Φ D1	Corresponding Model
29MS30F07	0.3mm/0.012 "	D361S12F07
29MS38F07	0.38mm/0.015 "	D361S15F07
29MS51F07	0.51mm/0.020 "	D361S20F07

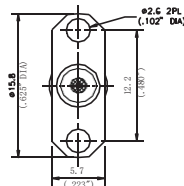
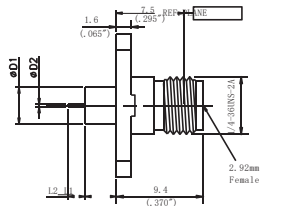
2. 92mm metal through wall connection



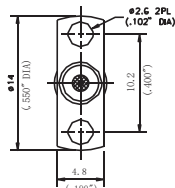
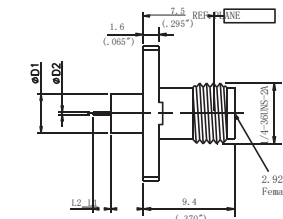
Model	ΦD1	ΦD2	L1	L2	Corresponding Model
29FM0403F01	4mm/0.158"	0.3mm/0.012"	1.4mm/0.055"	1.5mm/0.059"	D360M0403F01
29FM0503F01	4mm/0.158"	0.3mm/0.012"	3mm/0.018"	1.5mm/0.059"	D360M0503F01



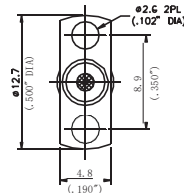
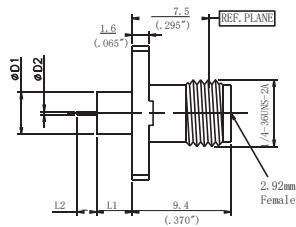
Model	ΦD1	ΦD2	L1	L2	Corresponding Model
29FM0403F02	4mm/0.158"	0.3mm/0.012"	1.4mm/0.055"	1.5mm/0.059"	D360M0403F02
29FM0503F02	4mm/0.158"	0.3mm/0.012"	3mm/0.018"	1.5mm/0.059"	D360M0503F02



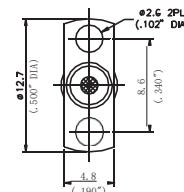
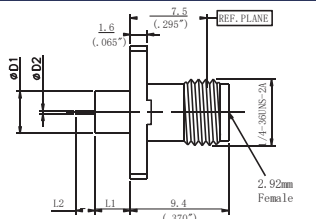
Model	ΦD1	ΦD2	L1	L2	Corresponding Model
29FM0403F04	4mm/0.158"	0.3mm/0.012"	1.4mm/0.055"	1.5mm/0.059"	D360M0403F04
29FM0503F04	4mm/0.158"	0.3mm/0.012"	3mm/0.018"	1.5mm/0.059"	D360M0503F04



Model	ΦD1	ΦD2	L1	L2	Corresponding Model
29FM0403F05	4mm/0.158"	0.3mm/0.012"	1.4mm/0.055"	1.5mm/0.059"	D360M0403F05
29FM0503F05	4mm/0.158"	0.3mm/0.012"	3mm/0.018"	1.5mm/0.059"	D360M0503F05

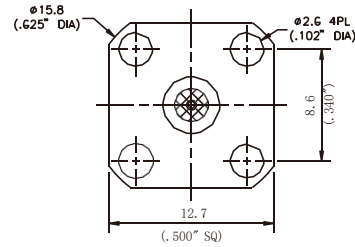
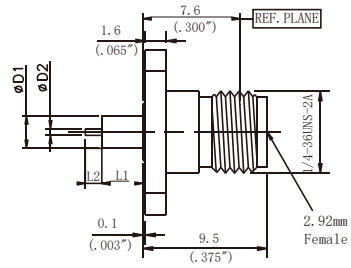


Model	ΦD1	ΦD2	L1	L2	Corresponding Model
29FM0403F06	4mm/0.158"	0.3mm/0.012"	1.4mm/0.055"	1.5mm/0.059"	D360M0403F06
29FM0503F06	4mm/0.158"	0.3mm/0.012"	3mm/0.018"	1.5mm/0.059"	D360M0503F06

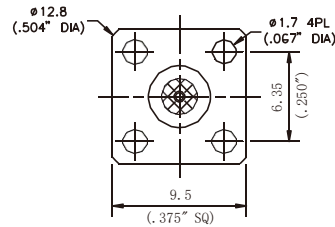
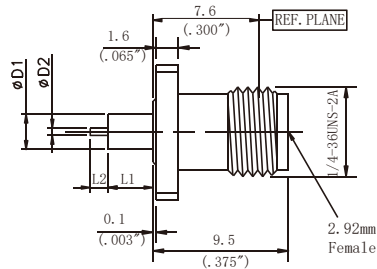


Model	ΦD1	ΦD2	L1	L2	Corresponding Model
29FM0403F07	4mm/0.158"	0.3mm/0.012"	1.4mm/0.055"	1.5mm/0.059"	D360M0403F07
29FM0503F07	4mm/0.158"	0.3mm/0.012"	3mm/0.018"	1.5mm/0.059"	D360M0503F07

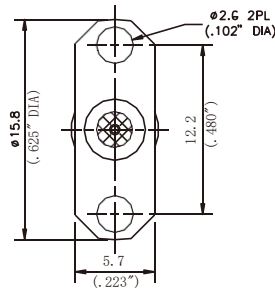
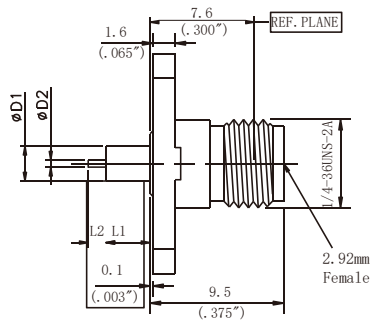
2. 92mm medium through wall connector



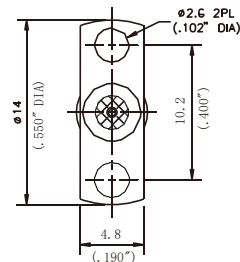
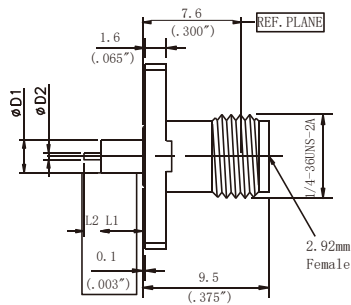
Model	ΦD1	ΦD2	L1	L2	Corresponding Model
29FP0403F01	1.67mm/0.066 "	0.3mm/0.012 "	1.4mm/0.055 "	1.5mm/0.059 "	D360P0403F01
29FP0503F01	1.67mm/0.066 "	0.3mm/0.012 "	3mm/0.018 "	1.5mm/0.059 "	D360P0503F01



Mode	ΦD1	ΦD2	L1	L2	Corresponding Model
29FP0403F02	1.67mm/0.066 "	0.3mm/0.012 "	1.4mm/0.055 "	1.5mm/0.059 "	D360P0403F02
29FP0503F02	1.67mm/0.066 "	0.3mm/0.012 "	3mm/0.018 "	1.5mm/0.059 "	D360P0503F02

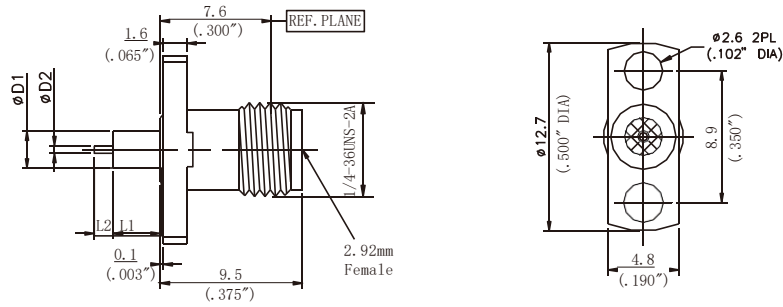


Model	ΦD1	ΦD2	L1	L2	Corresponding Model
29FP0403F04	1.67mm/0.066 "	0.3mm/0.012 "	1.4mm/0.055 "	1.5mm/0.059 "	D360P0403F04
29FP0503F04	1.67mm/0.066 "	0.3mm/0.012 "	3mm/0.018 "	1.5mm/0.059 "	D360P0503F04

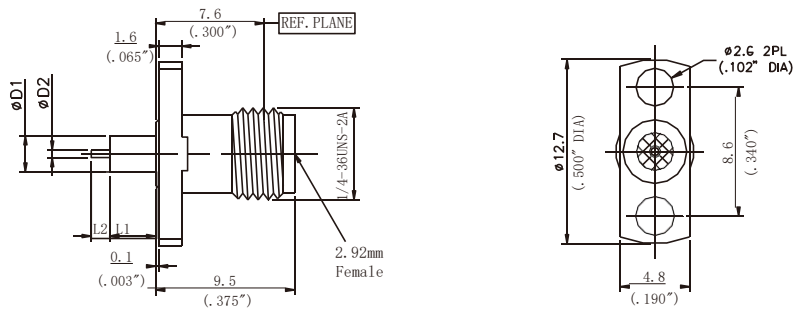


Model	ΦD1	ΦD2	L1	L2	Corresponding Model
29FP0403F05	1.67mm/0.066 "	0.3mm/0.012 "	1.4mm/0.055 "	1.5mm/0.059 "	D360P0403F05
29FP0503F05	1.67mm/0.066 "	0.3mm/0.012 "	3mm/0.018 "	1.5mm/0.059 "	D360P0503F05

2. 92mm medium through wall connector

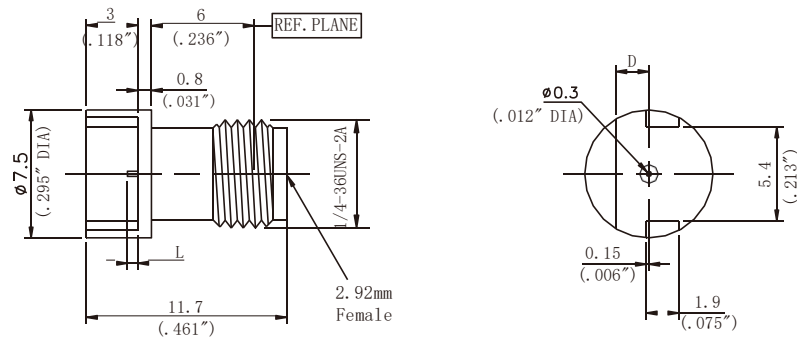


Mode	$\Phi D1$	$\Phi D2$	L1	L2	Corresponding Model
29FP0403F06	1.67mm/0.066 "	0.3mm/0.012 "	1.4mm/0.055 "	1.5mm/0.059 "	D360P0403F06
29FP0503F06	1.67mm/0.066 "	0.3mm/0.012 "	3mm/0.018 "	1.5mm/0.059 "	D360P0503F06



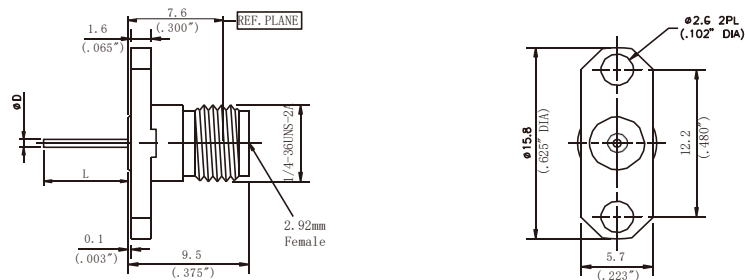
Model	$\Phi D1$	$\Phi D2$	L1	L2	Corresponding Model
29FP0403F07	1.67mm/0.066 "	0.3mm/0.012 "	1.4mm/0.055 "	1.5mm/0.059 "	D360P0403F07
29FP0503F07	1.67mm/0.066 "	0.3mm/0.012 "	3mm/0.018 "	1.5mm/0.059 "	D360P0503F07

2. 92mm PCB connector

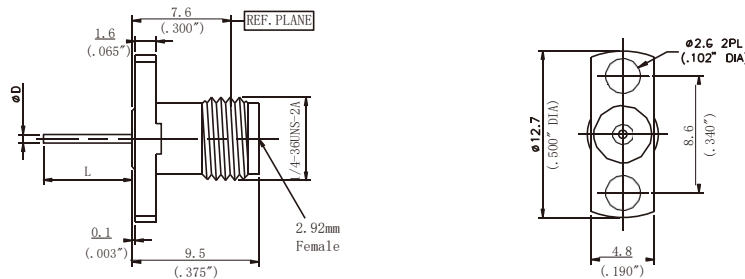


Model	ΦD	L	Suitable for plate thickness	Corresponding Model
29FB12E01-023	1.93mm/0.076 "	0.6mm/0.023 "	1.78mm/0.070 "	D360B12E01-023
29FB12E02-023	0.76mm/0.030 "	0.6mm/0.023 "	0.61mm/0.024 "	D360B12E02-023
29FB12E03-023	1.02mm/0.040 "	0.6mm/0.023 "	0.87mm/0.034 "	D360B12E03-023

2. 92mm air wire through wall connector



Model	ΦD	L	Corresponding Model
29FD25F04-430	0.64mm/0.025 "	10.92mm/0.43 "	D360D25F04-430
29FD25F04-269	0.64mm/0.025 "	6.84mm/0.269 "	D360D25F04-269



Model	ΦD	L	Corresponding Model
29FD25F07-430	0.64mm/0.025 "	10.92mm/0.43 "	D360D25F07-430
29FD25F07-269	0.64mm/0.025 "	6.84mm/0.269 "	D360D25F07-269

2.4mm Connector family (DC~50GHz)

2.4mm Series RF coaxial connector, with frequency up to 50GHz, is a kind of connector commonly used in millimeter wave products. Many millimeter wave instruments often use 2.4mm input and output ports. 2.4mm products are mature, more solid and reliable in structure, and have excellent development prospects in the field of millimeter wave.

Main performance indexes

Materials / finishes

Characteristic impedance: 50Ω

Shell: stainless steel su303 polished / passivated

Frequency range: DC~50GHz

Center conductor: Beryllium Bronze gold plated (as per mil-g-45204)

Voltage standing wave ratio (VSWR) :

Insulator: PEI or PEI&PTFE

DC~50GHz···· 1.15:1 (Maximum)

Contact resistance: center conductor ≤ 3.0m Ω

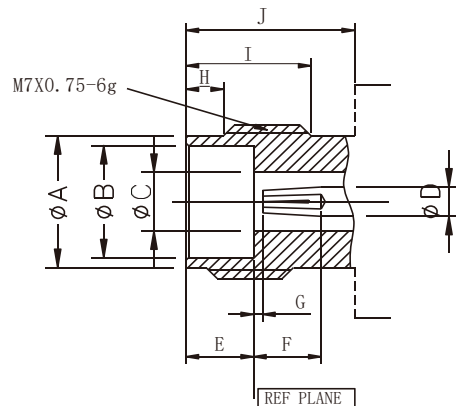
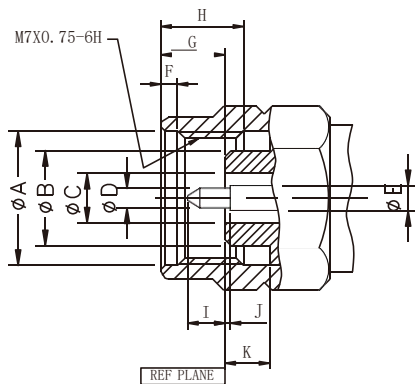
Outer conductor ≤ 2.0m Ω

Insulation resistance: ≥ 3000m Ω

Dielectric Strength: 750V

Connector durability: 500 times temperature range: - 55 °C ~ + 165 °C

Interface dimension

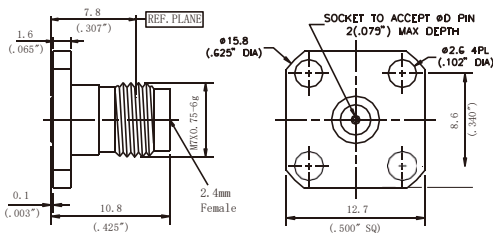


2.4mm Male				
	mm		Inch	
	Min	Max	Min	Max
A	7.01	7.11	0.276	0.280
B	4.72	4.75	0.186	0.187
C	2.39	2.41	0.094	0.095
D	0.50	0.52	0.0196	0.0206
E	1.03	1.05	0.0405	0.0415
F	0.51	0.76	0.020	0.030
G	1.85	2.45	0.073	0.105
H	4.37	4.65	0.172	0.183
I	1.35	1.45	0.053	0.057
J	0	0.076	0	0.003
K	3.38	3.48	0.133	0.137

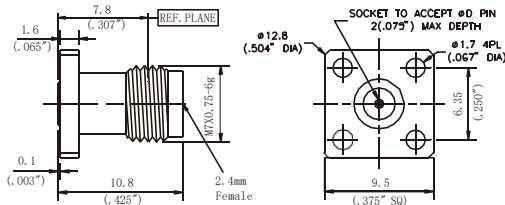
2.4mm Female				
	mm		Inch	
	Min	Max	Min	Max
A	5.79	5.89	0.228	0.232
B	4.77	4.795	0.1878	0.1888
C	2.39	2.41	0.094	0.095
D	1.03	1.05	0.0406	0.0414
E	3.00	3.10	0.118	0.122
F	2.65	—	0.1043	—
G	0	0.076	0	0.003
H	1.37	1.63	0.054	0.064
I	4.80	5.05	0.189	0.199
J	6	—	0.2362	—

界面符合 IEC 61169

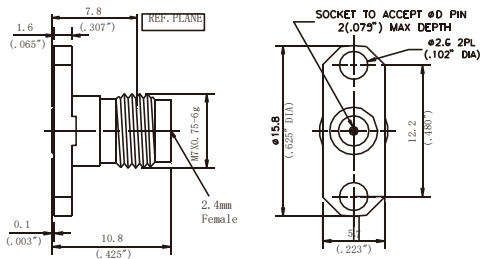
2. 4mm detachable connector



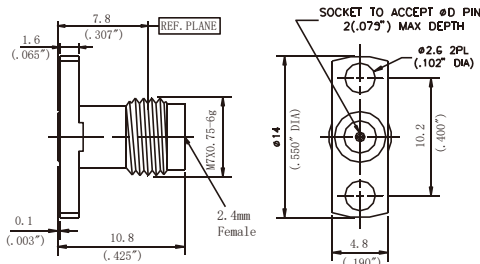
Model	Jack diameter Φ D	Corresponding Model
24FS23F01	0.23mm/0.009 "	D370S09F01
24FS30F01	0.30mm/0.012 "	D370S12F01
24FS38F01	0.38mm/0.015 "	D370S15F01
24FS51F01	0.51mm/0.020 "	D370S20F01



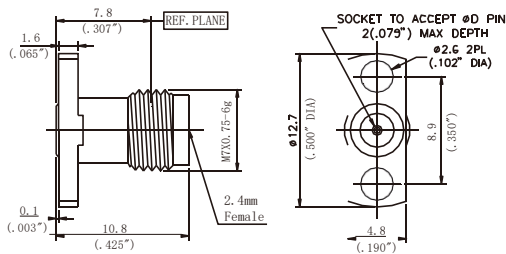
Model	Jack diameter Φ D	Corresponding Model
24FS23F02	0.23mm/0.009 "	D370S09F02
24FS30F02	0.30mm/0.012 "	D370S12F02
24FS38F02	0.38mm/0.015 "	D370S15F02
24FS51F02	0.51mm/0.020 "	D370S20F02



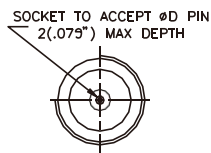
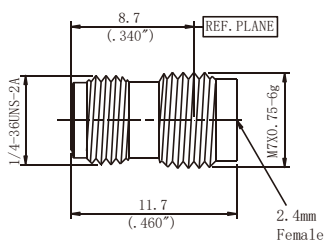
Model	Jack diameter Φ D	Corresponding Model
24FS23F04	0.23mm/0.009 "	D370S09F04
24FS30F04	0.30mm/0.012 "	D370S12F04
24FS38F04	0.38mm/0.015 "	D370S15F04
24FS51F04	0.51mm/0.020 "	D370S20F04



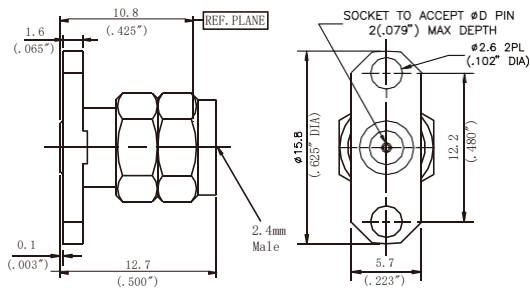
Model	Jack diameter Φ D	Corresponding Model
24FS23F05	0.23mm/0.009 "	D370S09F05
24FS30F05	0.30mm/0.012 "	D370S12F05
24FS38F05	0.38mm/0.015 "	D370S15F05
24FS51F05	0.51mm/0.020 "	D370S20F05



Model	Jack diameter Φ D	Corresponding Model
24FS23F06	0.23mm/0.009 "	D370S09F06
24FS30F06	0.30mm/0.012 "	D370S12F06
24FS38F06	0.38mm/0.015 "	D370S15F06
24FS51F06	0.51mm/0.020 "	D370S20F06

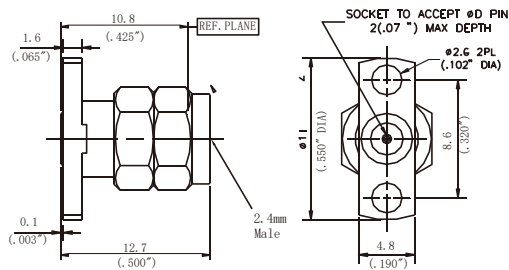


Model	Jack diameter Φ D	Corresponding Model
24FS30Y01	0.3mm/0.012 "	D370S12Y01
24FS51Y01	0.51mm/0.020 "	D370S20Y01



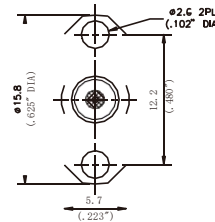
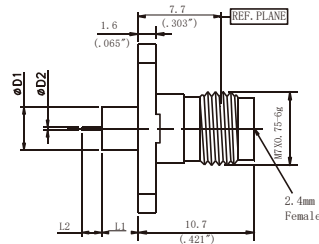
Model	Jack diameter Φ D	Corresponding Model
24MS30F04	0.3mm/0.012 "	D371S12F04
24MS51F04	0.51mm/0.015 "	D371S20F04

9

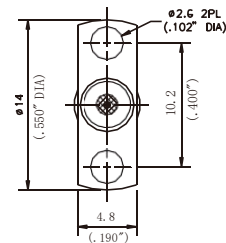
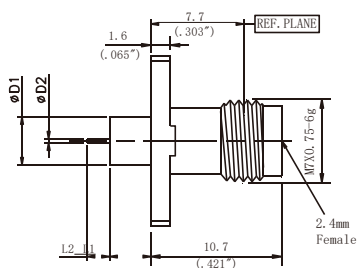


Model	Jack diameter Φ D	Corresponding Model
24MS30F07	0.3mm/0.012 "	D371S12F07
24MS51F07	0.51mm/0.015 "	D371S20F07

2.4mm metal through wall connection

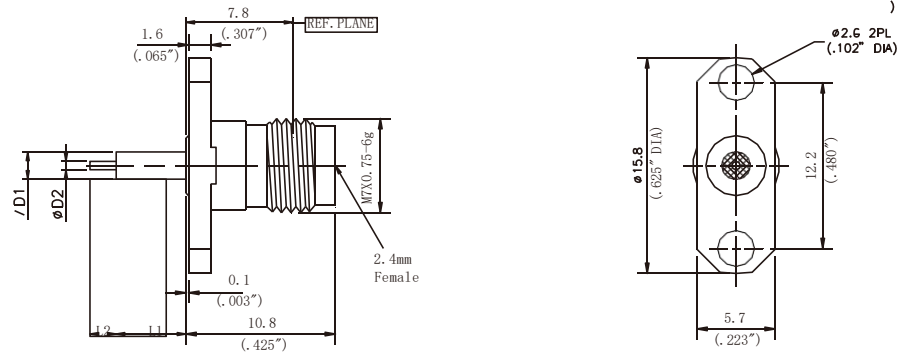


Model	ΦD1	ΦD2	L1	L2	Corresponding Model
24FM0403F04	4mm/0.158 "	0.3mm/0.012 "	1.4mm/0.055	1.5mm/0.059	D370M0403F04
24FM0503F04	4mm/0.158	0.3mm/0.012	3mm/0.018	1.5mm/0.059	D370M0503F04

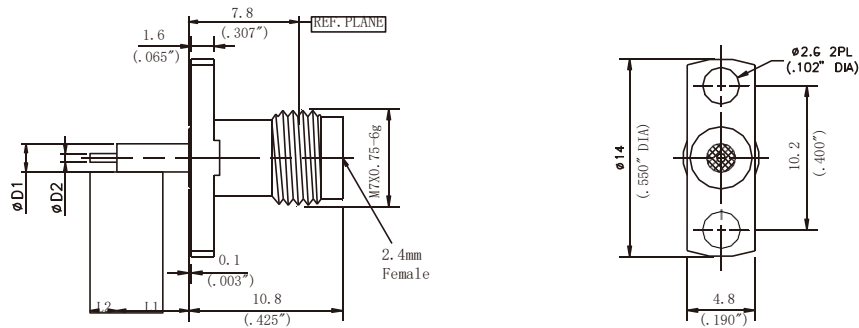


Model	ΦD1	ΦD2	L1	L2	Corresponding Model
24FM0403F05	4mm/0.158 "	0.3mm/0.012 "	1.4mm/0.055	1.5mm/0.059	D370M0403F05
24FM0503F05	4mm/0.158	0.3mm/0.012	3mm/0.018	1.5mm/0.059	D370M0503F05

2. 4mm medium through wall connector

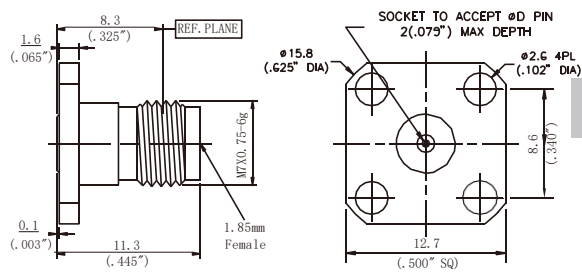


Model	ΦD1	ΦD2	L1	L2	Corresponding Model
24FP0503F04	1.67mm/0.066"	0.3mm/0.012"	3mm/0.018"	1.5mm/0.059"	D370P503F04
24FP0403F04	1.67mm/0.066"	0.3mm/0.012"	1.4mm/0.055"	1.5mm/0.059"	D370P503F04

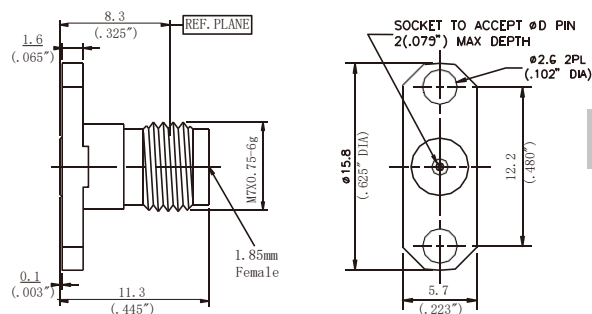


Model	ΦD1	ΦD2	L1	L2	Corresponding Model
24FP0503F05	1.67mm/0.066"	0.3mm/0.012"	3mm/0.018"	1.5mm/0.059"	D370P503F05
24FP0403F05	1.67mm/0.066"	0.3mm/0.012"	1.4mm/0.055"	1.5mm/0.059"	D370P503F05

1. 85mm detachable connector

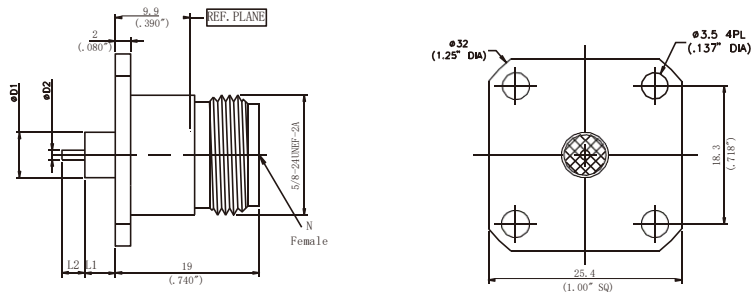


Model	Jack diameter Φ D	Corresponding Model
18FS23F01	0.23mm/0.009"	D380S09F01
18FS30F01	0.30mm/0.012"	D380S12F01

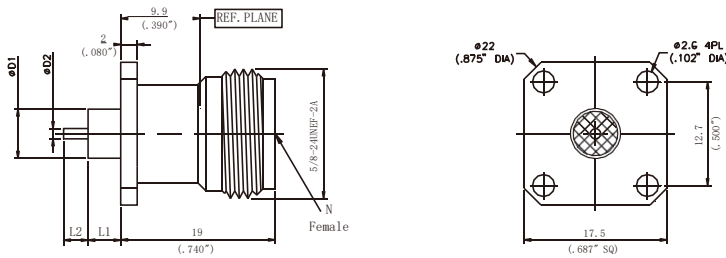


Model	Jack diameter Φ D	Corresponding Model
18FS23F04	0.23mm/0.009"	D380S09F04
18FS30F04	0.30mm/0.012"	D380S12F04

N-type metal through wall connector

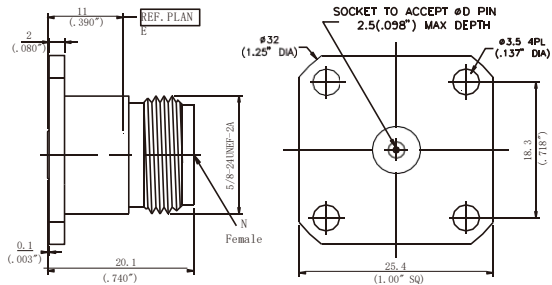


Model	ΦD1	ΦD2	L1	L2	Corresponding Model
NTFM0306F10	6mm/0.236	1.27mm/0.05	4mm/0.158	3mm/0.118	D340M0306F10

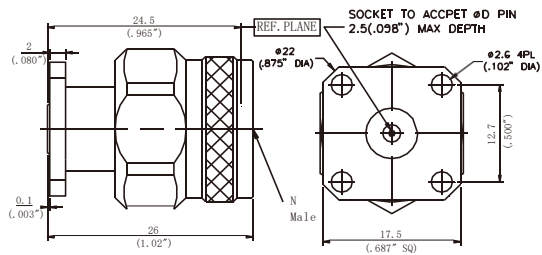


Model	ΦD1	ΦD2	L1	L2	Corresponding Model
NTFM0306F09	6mm/0.236	1.27mm/0.05	4mm/0.158	3mm/0.118	D340M0306F09

N-type detachable connector

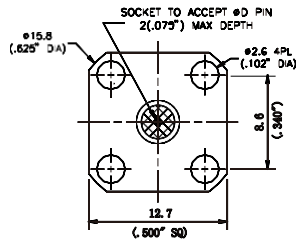
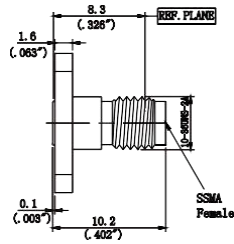


Model	Jack diameter Φ D	Corresponding Model
NTFS45F10	0.46mm/0.018 "	D340S18F10
NTFS51F10	0.51mm/0.020 "	D340S20F10
NTFS91F10	0.91mm/0.036 "	D340S36F10

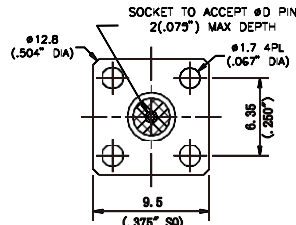
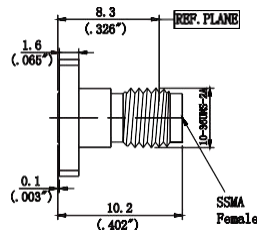


Model	Jack diameter Φ D	Corresponding Model
NTFS45F09	0.46mm/0.018	D340S18F09
NTFS51F09	0.51mm/0.020	D340S20F09
NTFS91F09	0.91mm/0.036	D340S36F09

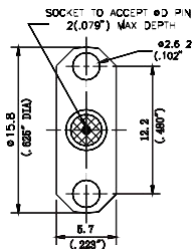
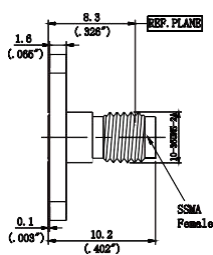
SSMS detachable connector



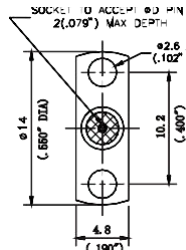
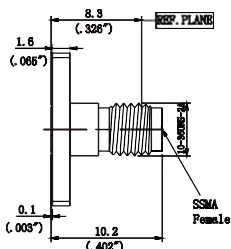
Model	Jack diameter Φ D	Corresponding Model
2AFS38F01	0.38mm/0.015 "	D570S15F01
2AFS45F01	0.46mm/0.018 "	D570S18F01
2AFS51F01	0.51mm/0.020 "	D570S20F01



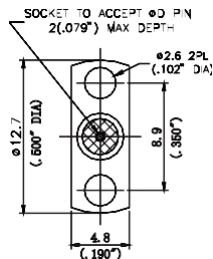
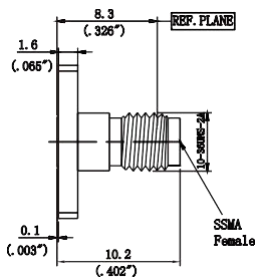
Model	Jack diameter Φ D	Corresponding Model
2AFS30F02	0.30mm/0.012	D570S12F02
2AFS38F02	0.38mm/0.015	D570S15F02
2AFS45F02	0.46mm/0.018	D570S18F02
2AFS51F02	0.51mm/0.020	D570S20F02



Model	Jack diameter Φ D	Corresponding Model
2AFS30F04	0.30mm/0.012	D570S12F04
2AFS38F04	0.38mm/0.015	D570S15F04
2AFS45F04	0.46mm/0.018	D570S18F04
2AFS51F04	0.51mm/0.020	D570S20F04

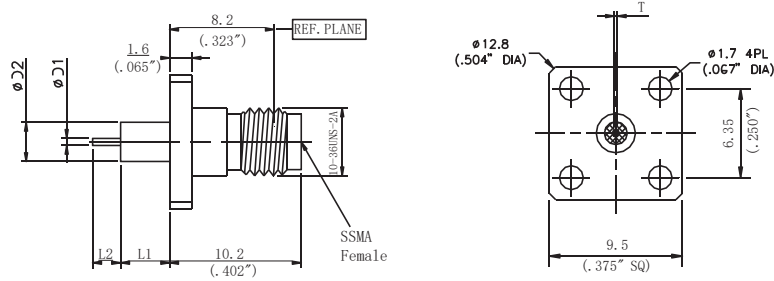


Model	Jack diameter Φ D	Corresponding Model
2AFS30F05	0.30mm/0.012	D570S12F05
2AFS38F05	0.38mm/0.015	D570S15F05
2AFS45F05	0.46mm/0.018	D570S18F05
2AFS51F05	0.51mm/0.020	D570S20F05

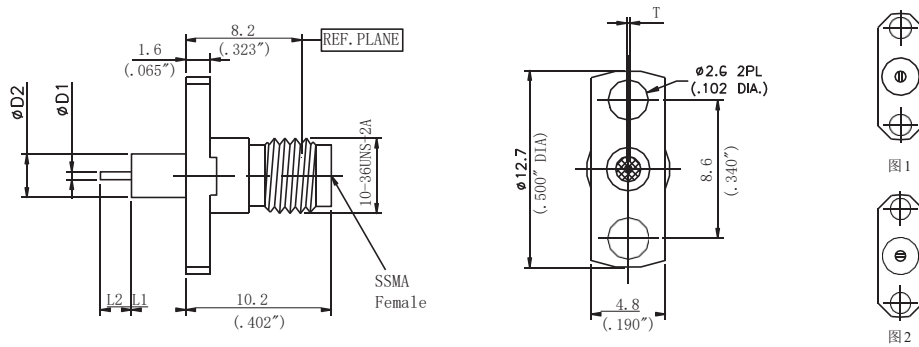


Model	Jack diameter Φ D	Corresponding Model
2AFS30F06	0.30mm/0.012	D570S12F06
2AFS38F06	0.38mm/0.015	D570S15F06
2AFS45F06	0.46mm/0.018	D570S18F06
2AFS51F06	0.51mm/0.020	D570S20F06

SSMA metal through wall connector



Model	$\Phi D1$	$\Phi D2$	L1	L2	T	Corresponding Model
2AFM0616F02	0.6mm/0.024"	2.8mm/0.110"	3.1mm/0.122"	2mm/0.08"	0.2mm/0.008"	D570M0616F02

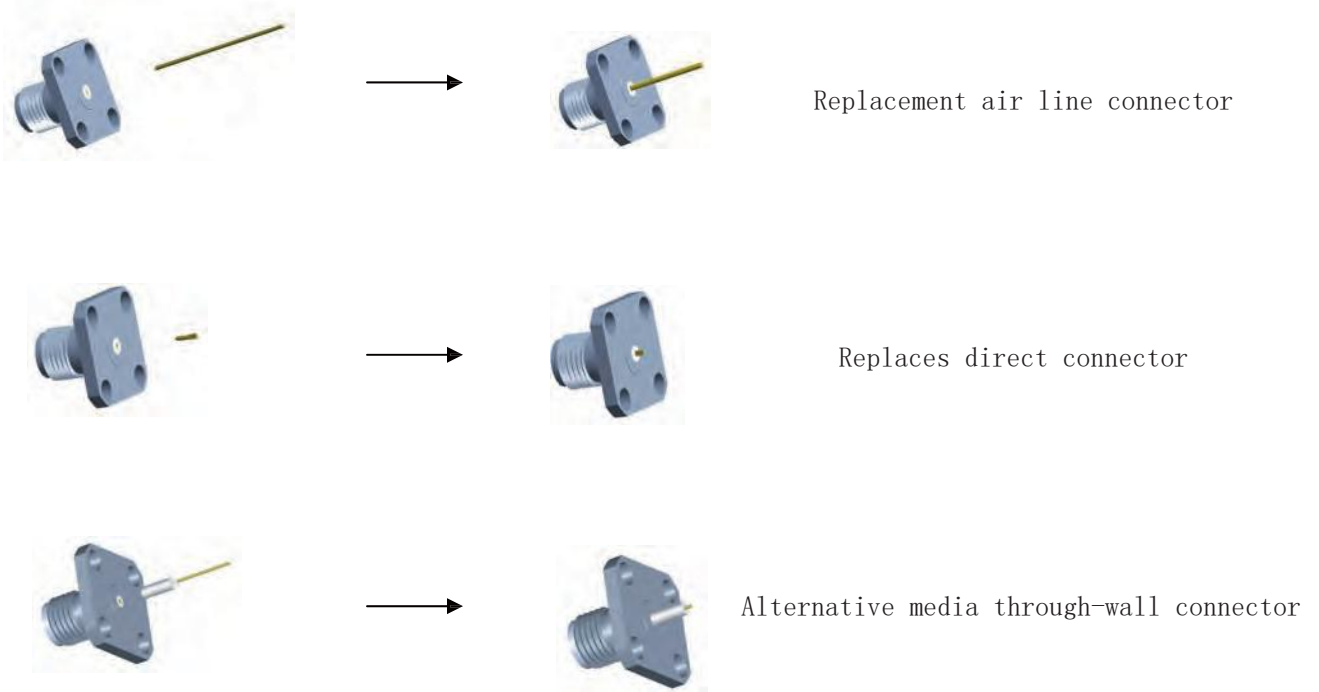


Model	$\Phi D1$	$\Phi D2$	L1	L2	T	Corresponding Model
2AFM0616F07	0.6mm/0.024"	2.8mm/0.110"	3.1mm/0.122"	2mm/0.08"	0.2mm/0.008"	D570M0616F07
2AFM0616F07C	0.6mm/0.024"	2.8mm/0.110"	3.1mm/0.122"	2mm/0.08"	0.2mm/0.008"	D570M0616F07C

Combined connector

The combined connector adopts a split structure, and a detachable connector is combined with the same PIN pin, which can be combined into a variety of sizes, which can effectively improve the delivery speed and reduce costs.

Structure type:

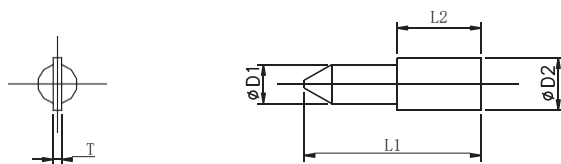


◇ Advantages of this structure:

1. Pins and connectors can be freely combined, and different sizes and specifications can be selected according to user needs to achieve standardization and batching of spare parts, improve delivery speed and reduce costs.
2. Once the connector pins are detached or turned, the power will not be transmitted to the inside of the microwave device, which greatly improves the reliability of the product.

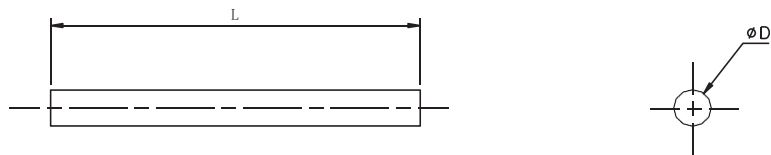
Split pin specifications

1. Flat needle



Model	φD1	φD2	L1	L2	T
N10S36	0.91mm/0.036"	1.27mm/0.05"	4.2mm/0.165"	2mm/0.079"	0.2mm/0.008"
N10S20	0.51mm/0.020"	0.6mm/0.024"	2.8mm/0.110"	1mm/0.04"	0.15mm/0.006"

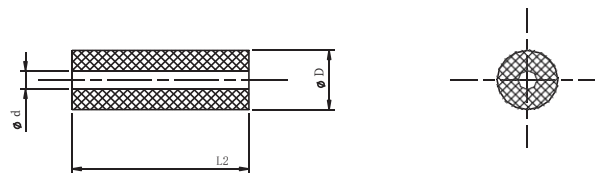
2. Round needle



Model	N04S20	N03S20	N04S18	N03S18	N04S15	N03S15	N04S12	N03S12
L	7.5mm/0.295"	6.5mm/0.256"	7.5mm/0.295"	6.5mm/0.256"	7.5mm/0.295"	6.5mm/0.256"	7.5mm/0.295"	6.5mm/0.256"
φD	0.51mm/0.02"		0.46mm/0.018"		0.38mm/0.015"		0.30mm/0.012"	

Note: The standard jack depth of the SMA \ 2.92mm \ 2.4mm \ SSMA removable connector is 2mm, and the standard jack depth of the N \ TNCA removable connector is 2.5mm.

3. Dielectric support (PTFE)



Model	P03S20	P04S20	P05S20	P06S20
φD	1.67mm/0.066"			
L2	3mm/0.118"	4mm/0.158"	3.18mm/0.125"	4.75mm/0.187"
φd	0.51mm/0.02"			